



OpenScape Personal Edition V7

Professional VoIP telephony and more

With OpenScape Personal Edition, you can use your notebook/PC as a telephone and make it the center of your voice communication.

System description

Personal Edition is the latest IP-based communication software that can be used in connection with OpenScape and HiPath communications systems. It is now available in a SIP and HFA variant.

Personal Edition is ideal for all mobile and stationary applications, offering the option of integrating corporate directories and personal call lists via LDAP. Rounded off by a highly sophisticated and intuitive user interface, Personal Edition is a constant companion for customers who also need to receive and make calls outside their office environment.

Advantages and benefits

- Cost-effective communication solution using a common infrastructure for data and voice.
- Security of investment due to a step-by-step introduction to multi-functionality at the workplace.
- The Personal Edition also offers advanced features such as e.g. journal entries.
- Increased efficiency due to the use of a common user interface, both in the office and on the move.
- Always the same phone number – regardless of location, users retain their own phone number for incoming and outgoing calls.

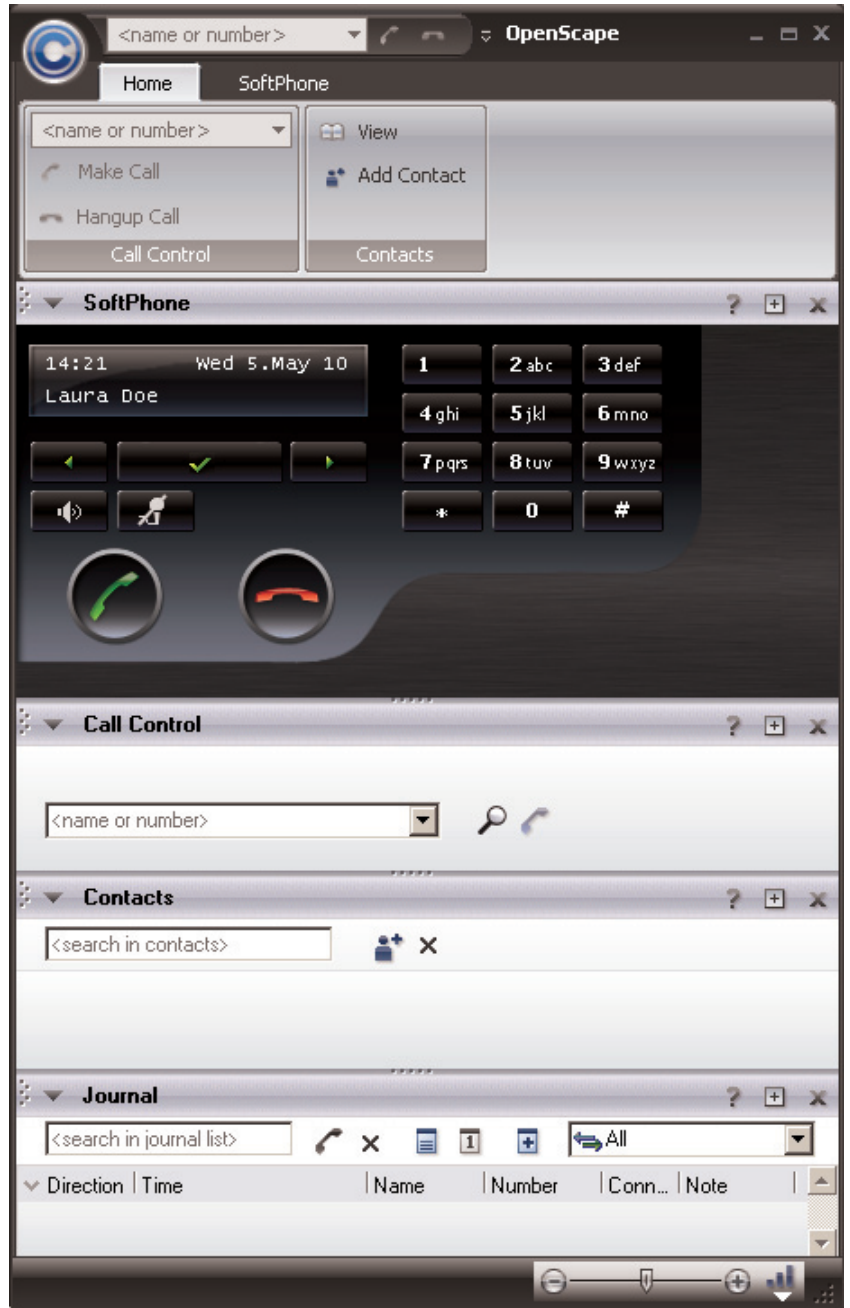
Features

With OpenScape Personal Edition, mobile PC users can avail themselves of the following functions in the field, at their home office or on business trips:

- Ideal solution for mobile workers – regardless of location, users retain their internal phone number. Take your direct dial number with you and make calls as usual whether you are using the IP infrastructure in one of your company's branches or dialing into a WLAN hotspot. Your PC-based Personal Edition enhances the multifaceted implementation options of your PC with communication software that you can use to make all calls from your personal extension, regardless of your location.
- By using the LDAP service, several corporate and personal directories can be integrated into the Personal Edition. Even without connecting to the directory server, your contact lists are always to hand. Dialing via keypad, corporate address book, other LDAP address books, call lists.
- Modular user interface that can be tailored to suit the needs of the individual user
- Telephony convenience functions, such as an enhanced keypad in the HFA client
- Individual access rights and other parameters are retained, such as initiated call forwarding, do-not-disturb
- Voice compression: G.711, G.722, G.723 and G.729
- Quality of Service (802.1p)
- Optional: special screensaver that signals the phone number and allows you to accept calls directly
- Video Call Management (H.263 & H.264) in the SIP variant in combination with OpenScape Voice, OpenScape UC Application V6 (OpenScape Desktop Video Conferencing H.264) and HiPath 4000 V6 (Softgate).
- Support of WAV and MP3 files used as ringtone

User Interface

The user interface is modular. It allows users to build individual window set-ups, each with separate functional units. In addition, the single windows can be individually arranged on the screen.



Main Toolbar (optional)

The main toolbar can be made visible and anchored to the top of the screen. You can access essential telephony functions via this toolbar, so only a small amount of space is required to operate a softclient.



Softphone

The softphone offers users telephony functions and access to function keys. It can be optionally displayed and placed in any position on the screen.



Video Telephony (SIP)

When video telephony is used, the conversational partner's picture is displayed as well as your own picture. It is possible to integrate a third participant for small conferences. For video conferences with more than three participants, the OpenScape Desktop Video Conferencing of the OpenScape UC Application V7 can be used. The video telephony features are available in the SIP variant of the Personal Edition in combination with OpenScape Voice and are offered within the normal SIP license.



Integration of Corporate Directory/Contacts List

You need to access your corporate address book while on the move? No problem. The LDAP service allows you to simply integrate your corporate directory into OpenScape Personal Edition.

You can manage individual and personal contacts in your contact directory.

What's more, individual contacts can be taken from various directories and incorporated into a contact list where they can be grouped according to specific requirements.

Technical data

System requirements

- OpenScape Voice V5, V6, V7 (SIP)
- HiPath 3000 V8, V9 (HFA, SIP from V8 R4)
- HiPath 4000 V5 (HFA)
- HiPath 4000 V6 (HFA & SIP for video)
- OpenScape Office LX/MX V3 (HFA & SIP)

PC requirements

- Operating Systems
 - Windows XP (32-bit, from SP2)
 - Windows XP (64-bit, from SP2 for SIP version)
 - Windows Vista (32-bit, from SP1)
 - Windows Vista (64-bit, from SP1 for SIP version)
 - Windows 7 (32-bit)
 - Windows 7 (64-bit for SIP version)
- Working memory
 - Min. 1.0 GB RAM if running on Windows XP
 - At least 1.5 GB RAM for Windows Vista
 - At least 1.5 GB RAM for Windows 7
 - 2 GB RAM recommended, but at least 256 MB free RAM for the communication software must be available
- Processor
 - at least 1 GHz; 2 GHz recommended (Please note that your operating system might have further requirements.)
 - Video (SIP): at least Core2Duo Processor Microsoft DirectX V9.0c or later
- At least 200 MB free memory on the hard disk
- CD ROM drive
- Ethernet network card for Quality of Service (QoS) function with 802.1p support
- USB support for connecting a handset or headset

Network/QoS

- Switched network, all components with IEEE 802.1p/q capability

Available languages

- German
- English
- French
- Spanish
- Italian
- Portuguese
- Portuguese (Brazil)
- Czech
- Russian
- Chinese (simplified), only with corresponding operating system

Copyright © Unify GmbH & Co. KG 10/2013
Hofmannstr. 51, 81379 Munich/Germany

All rights reserved.

Reference No.: A31002-G2570-D100-2-7629

The information provided in this document contains merely general descriptions or characteristics of performance which in case of actual use do not always apply as described or which may change as a result of further development of the products. An obligation to provide the respective characteristics shall only exist if expressly agreed in the terms of contract.

Availability and technical specifications are subject to change without notice.

Unify, OpenScape, OpenStage and HiPath are registered trademarks of Unify GmbH & Co. KG. All other company, brand, product and service names are trademarks or registered trademarks of their respective holders.